

EPSON Australia

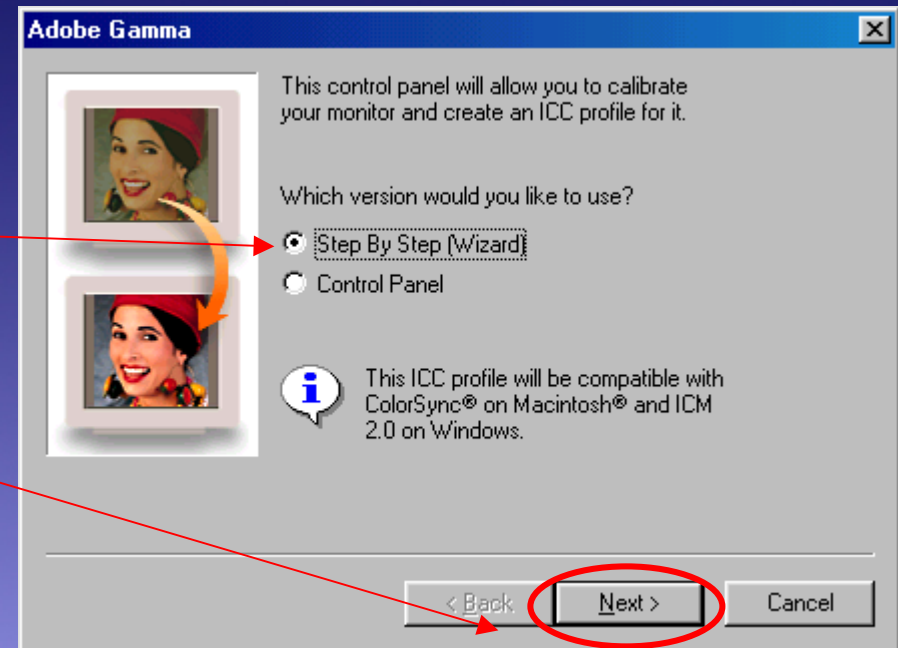
Recommended Adobe Photoshop 6.x
Settings for RGB Workflow.

Calibration, The Beginning

- Monitor Calibration is *the* most important starting point.
- Calibration is placing things into a know (standard) state.
- Calibration is needed to be able to Profile.
- Some Monitors cannot be Profiles e.g. LCD monitors and laptops.

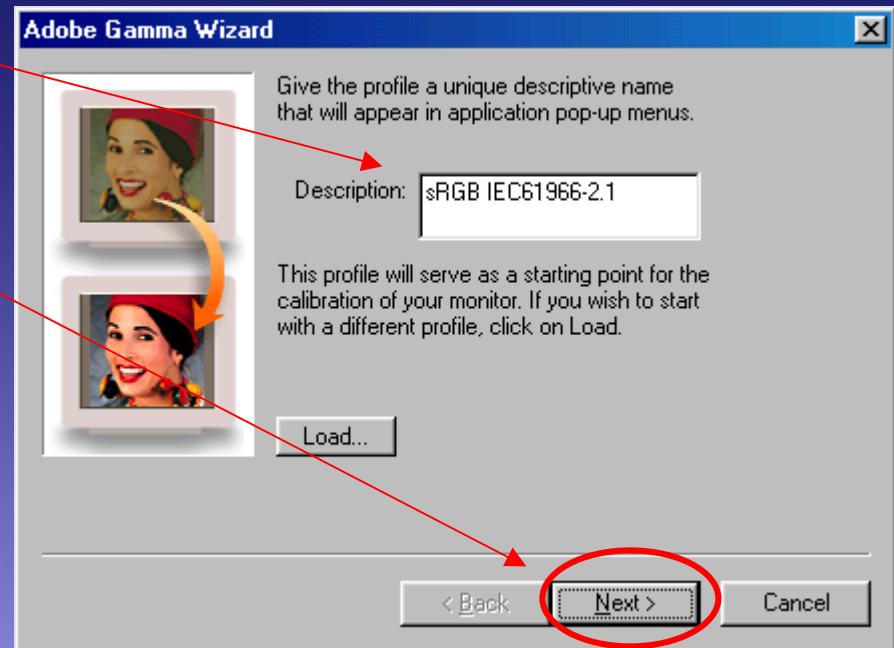
Using Adobe Gamma Utility

- Select; Start > Settings > Control Panel > Adobe Gamma.
- Select Step by Step Wizard.
- Select Next.



Adobe Gamma Cont.

- Ignore these settings.
- Select Next.

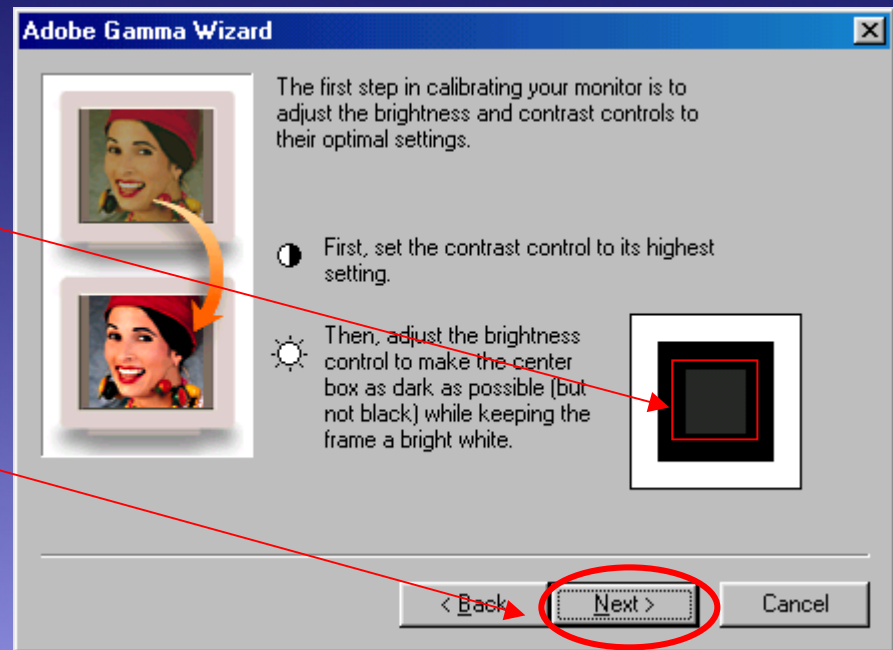


Adobe Gamma Cont.

- The controls for Brightness and Contrast are usually found just at the base of the monitor in front.
- Refer to the owners manual for the controls if not visible.
- Some monitors may not have controls, especially LCDs on laptops.

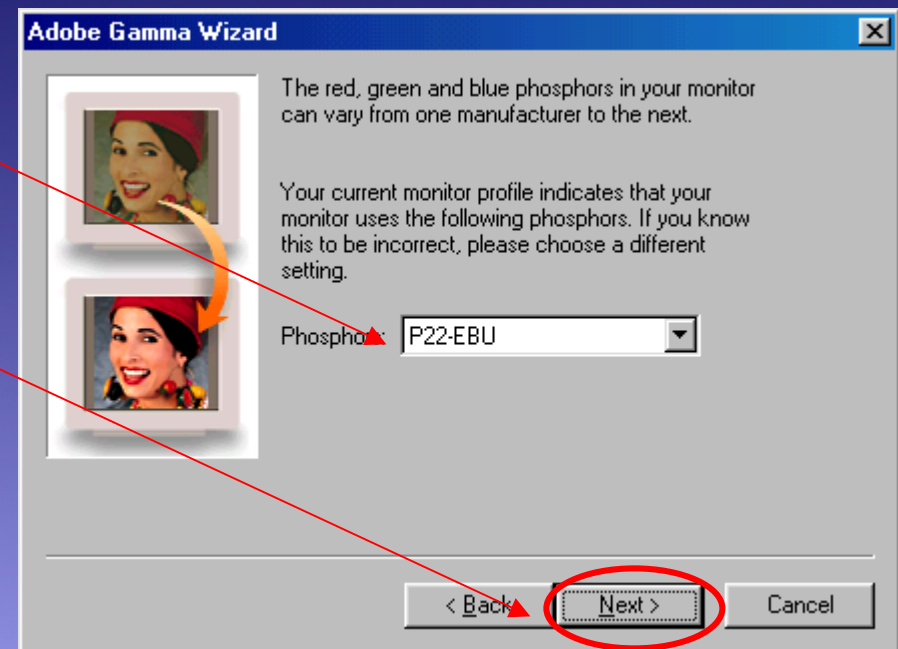
Adobe Gamma Cont.

- Adjust the contrast of the monitor to its highest level.
- Adjust monitor brightness until the inner square is just noticeable.
- Select Next.



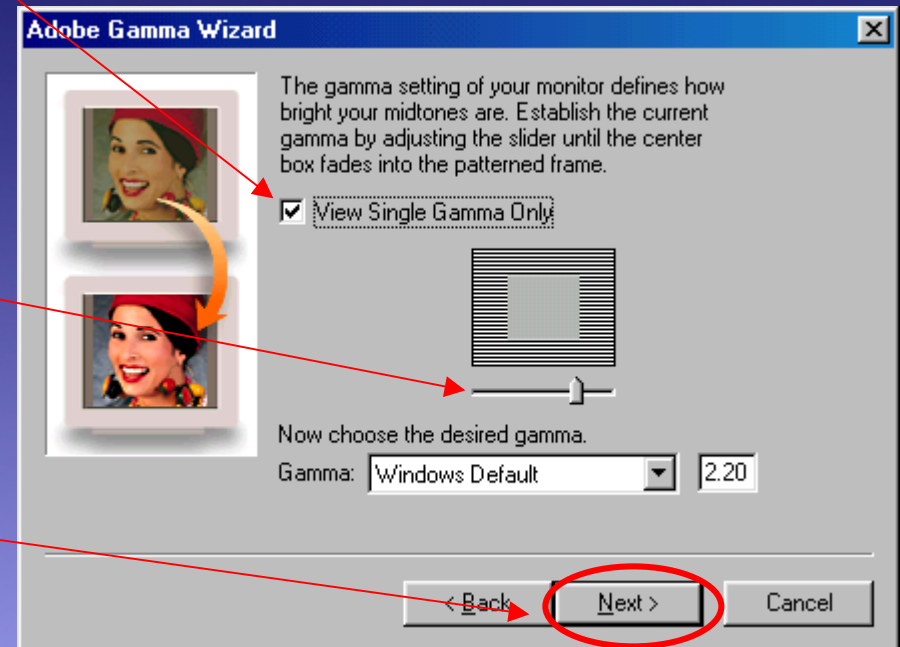
Adobe Gamma Cont.

- Select the Phosphors type.
- If the monitor type is not known select P22-EBU.
- Select Next.



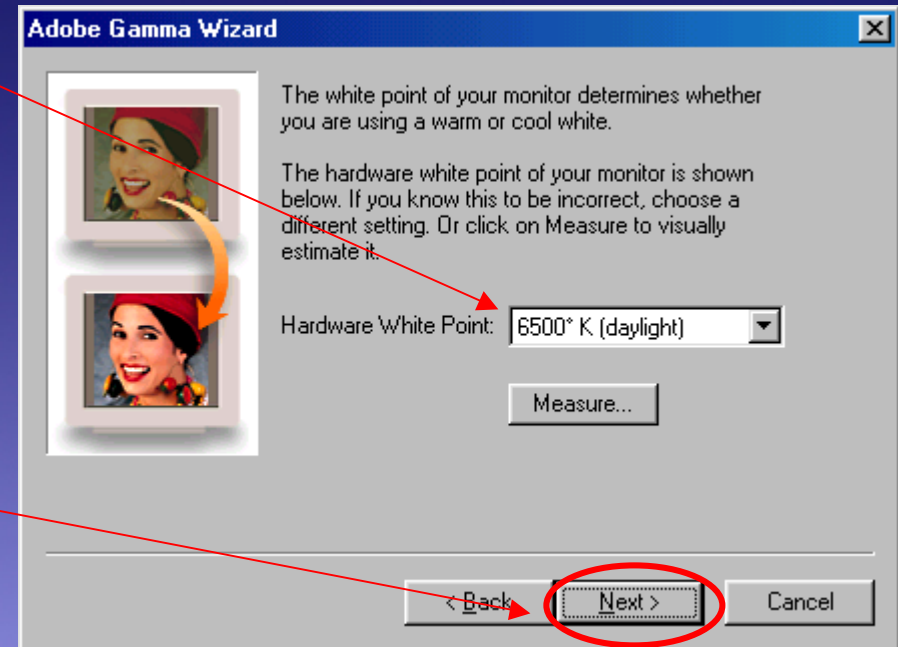
Adobe Gamma Cont.

- Select View Single Gamma Only.
- Move the slider until the gray centre box blends in with the outer lines (squinting makes this process easier).
- Select a Gamma of 2.2 for Windows or 1.8 for MAC.
- Select Next.



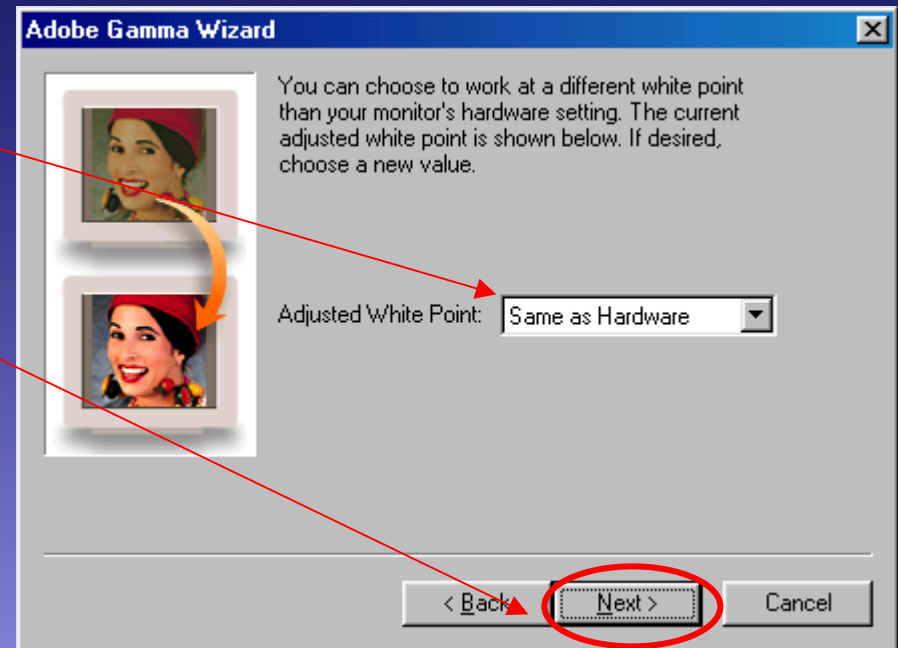
Adobe Gamma Cont.

- Select Hardware White Point of 6500 K (daylight).
- Select Next.



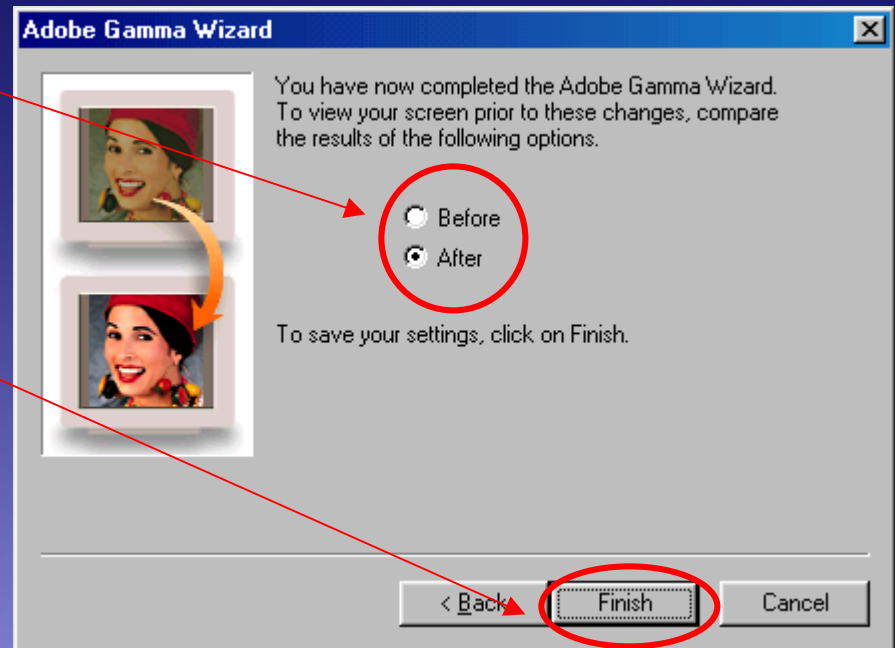
Adobe Gamma Cont.

- Select, Adjust White Point, to Same as Hardware.
- Select Next.



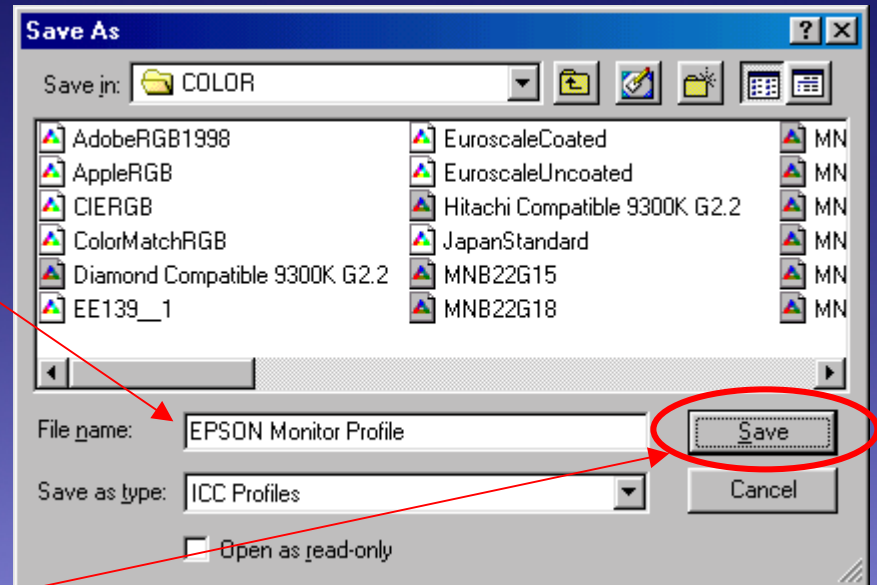
Adobe Gamma Cont.

- Switch between, Before and After, to see the differences.
- Select Finish.



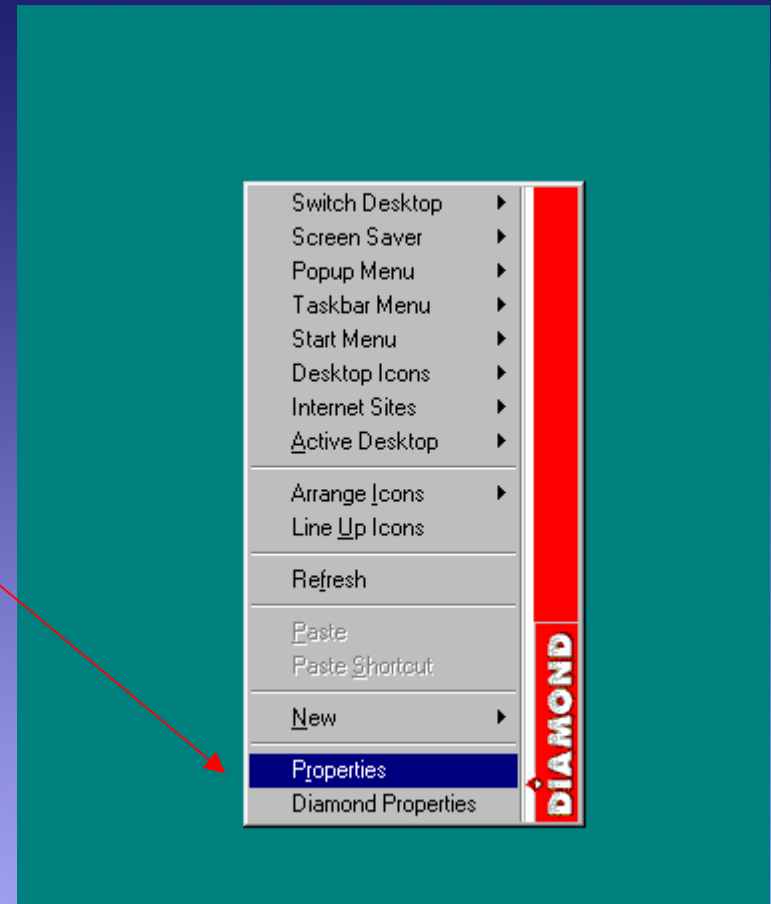
Adobe Gamma Cont.

- To create the Monitor Profile.
- Save the settings.
- Use a name that can be overwritten.
- A new Profile should be created once every 2-4 weeks to ensure that the Monitor is operating at it's optimum.
- Select Save.



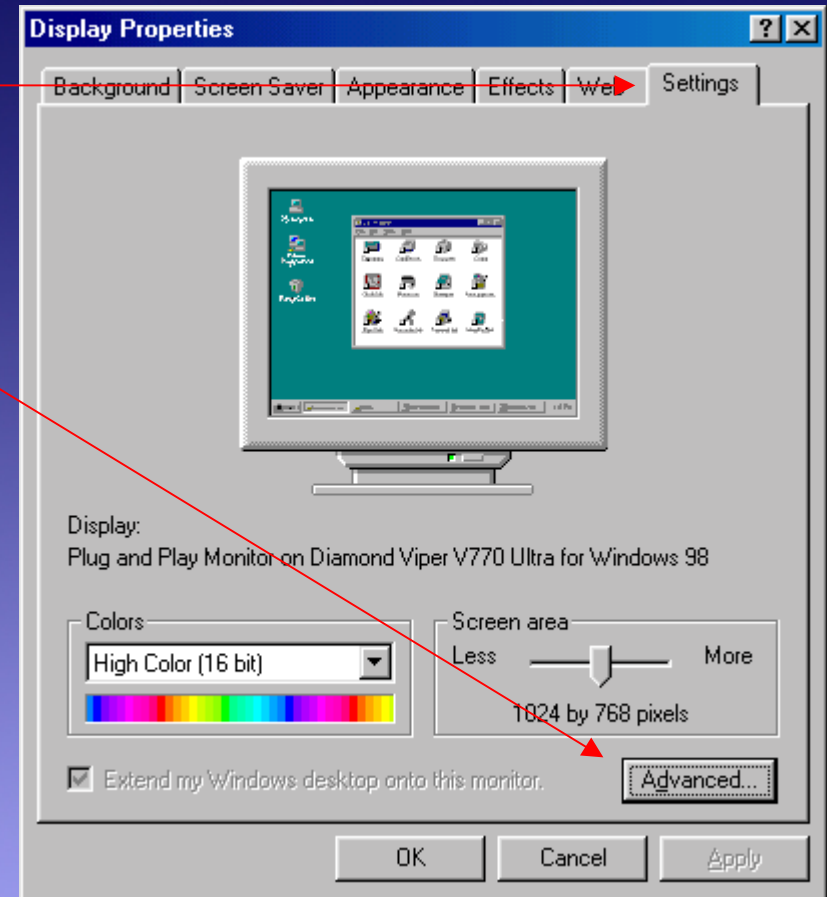
Adobe Gamma Cont.

- To apply these settings right click on the desktop
- Select the properties of the Video Card



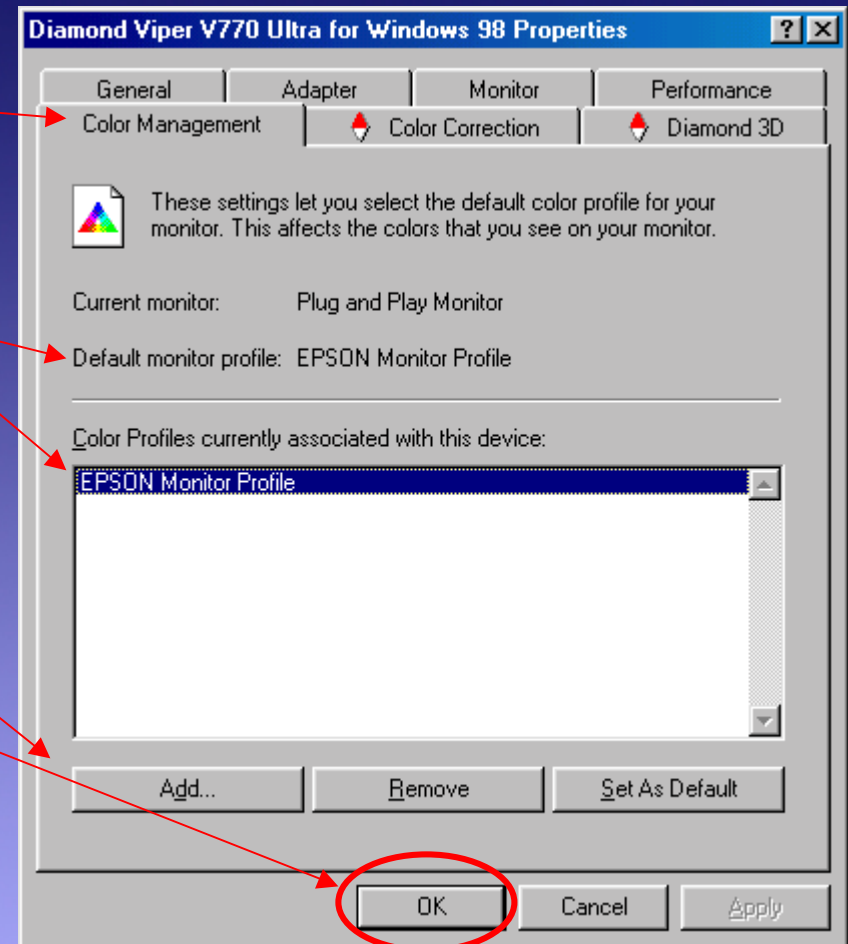
Adobe Gamma Cont.

- Select the Settings Tab.
- Select Advanced.



Adobe Gamma Cont.

- Select the Color Management Tab.
- The new Profile should already be selected as the default.
- If not then select the Add button and select the created Profile.
- Select OK to Finish.



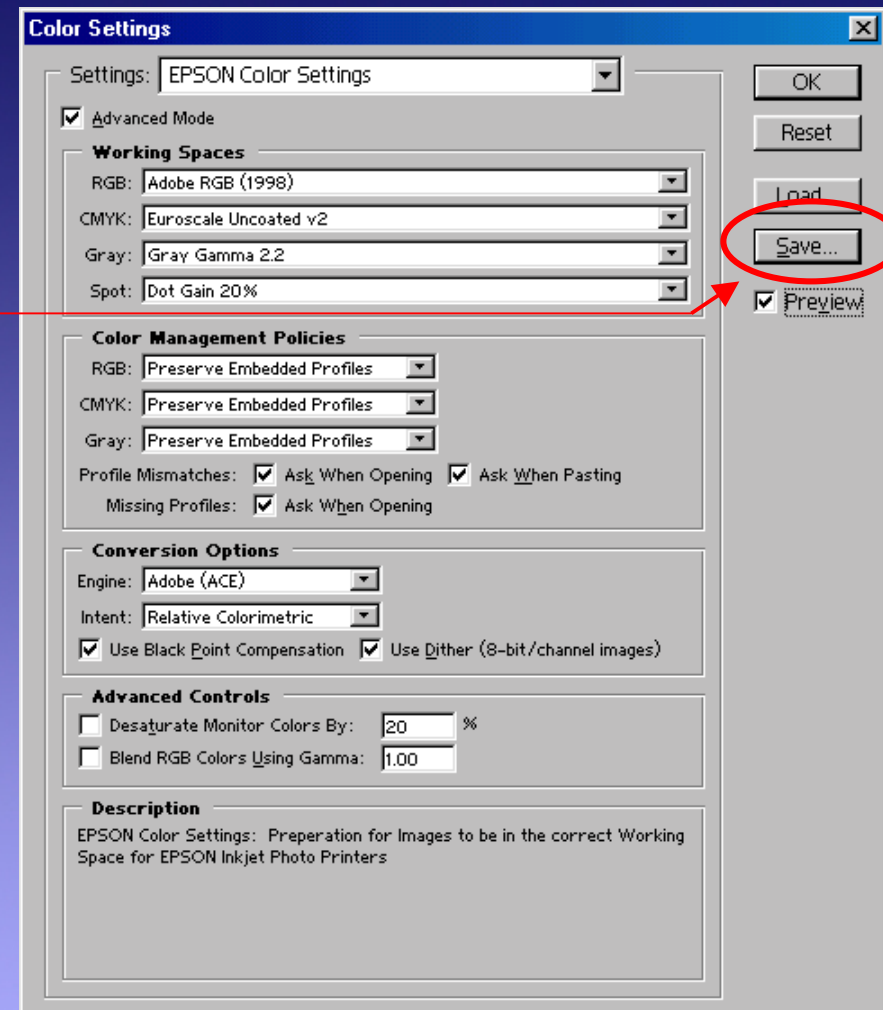
Adobe Gamma Conclusion

- Adobe Gamma Utility is an good way to create a Monitor Profile.
- The other ways of creating a Profile is with the use of hardware and software combinations.
- These solutions can cost between \$500.00 and \$40,000.00.

Photoshop Colour Settings

Edit > Colour Setting
Shift + Ctrl + k

It is recommended
you save these
settings.



Obtaining Paper Profiles

- EPSON Australia supply profiles for the majority of EPSON Genuine Media's.
- These profiles are available for down loading at the EPSON Australia website: www.epson.com.au.
- Negotiate the website to the Inkjet Printer Driver section of site and the profiles are listed with the specific printer.
- If the profile for the EPSON Genuine Media is not available, please check the website on a regular basis as more profiles are made available.

Installing Profiles Windows 98/ME

- The path for installation of the profiles in to Windows 98/ME is as follows.
- C:\windows\system\color.
- Copy and past the profiles into the “color” directory and then restart the computer.

Installing the Profiles into Windows 2000

- The path for installation of profiles in to Windows 2000 is as follows.
- C:\winnt\system32\spool\drivers\color.
- Copy and past the profiles into the “color” directory and then restart the computer.

Installing Profiles into Windows XP

- The path for the installation of profiles into Windows XP.
- C:\winnt\system32\spool\drivers\color.

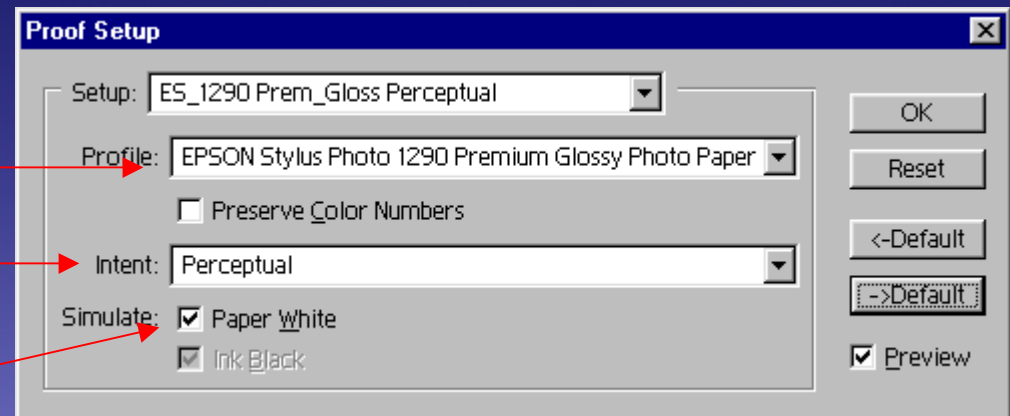
Soft Proofing

Soft Proofing Settings

- Soft Proofing is used to simulate the printed output on screen.
- This is not a 100% true representation only a *simulation*.
- The Soft Proofing function does not change the actual characteristics of the image only the preview.

Soft Proofing Settings Cont.

- Select; View>Proof Setup>Custom.
- Select the printer and media type being used.
- Select the intent.
- Select the paper white-ink black. (When paper white is selected, ink black gray's out).



Switching between *Perceptual* and *Relative Colorimetric* can produce different results either can be favorable. *Saturation* is not recommended nor is *Absolute Colorimetric* for RGB photographic printing

Soft Proofing Cont.

- To view the Soft Proof on screen press Ctrl + Y (Command + Y on MAC).
- The image changes to give you a preview of how it will print on the chosen paper type.

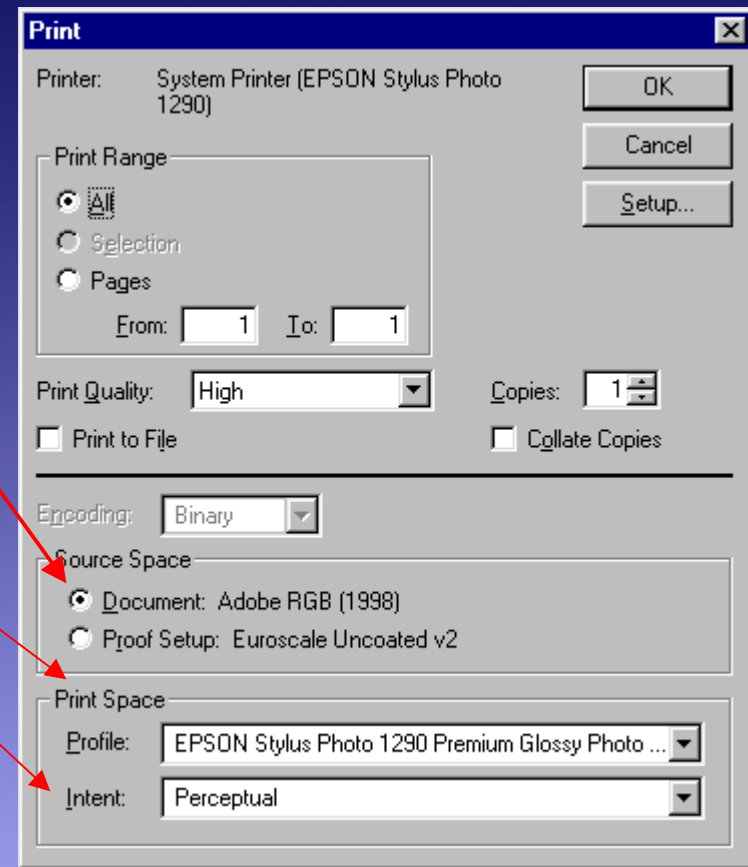
Printing Using the ICC Profile

- There are two recommended workflows for printing using ICC Profiles.
- Workflow 1 is used to preserve the original data.
- Workflow 2 is used to convert the original data and embed the ICC Profile for printing to an outside source.

Workflow 1

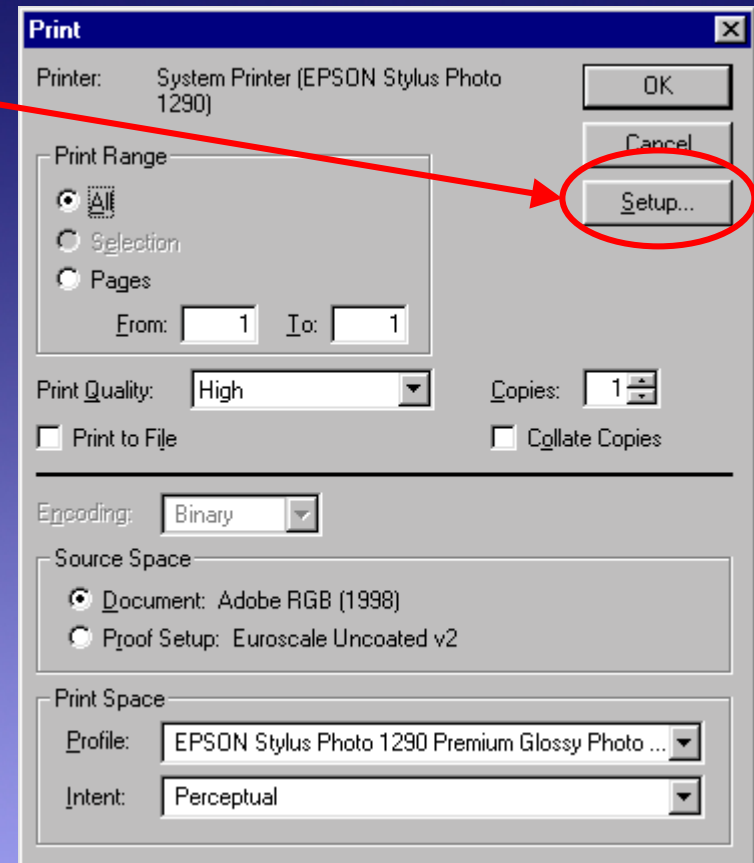
Printing: Workflow 1

- Select; File > Print.
- Source Profile is what is embedded from the Photoshop Colour Settings.
- Select the Print Space that was chosen in the Soft Proof option.
- Select the preferred Intent.
- The intent should be the same as was chosen for the Soft Proof.



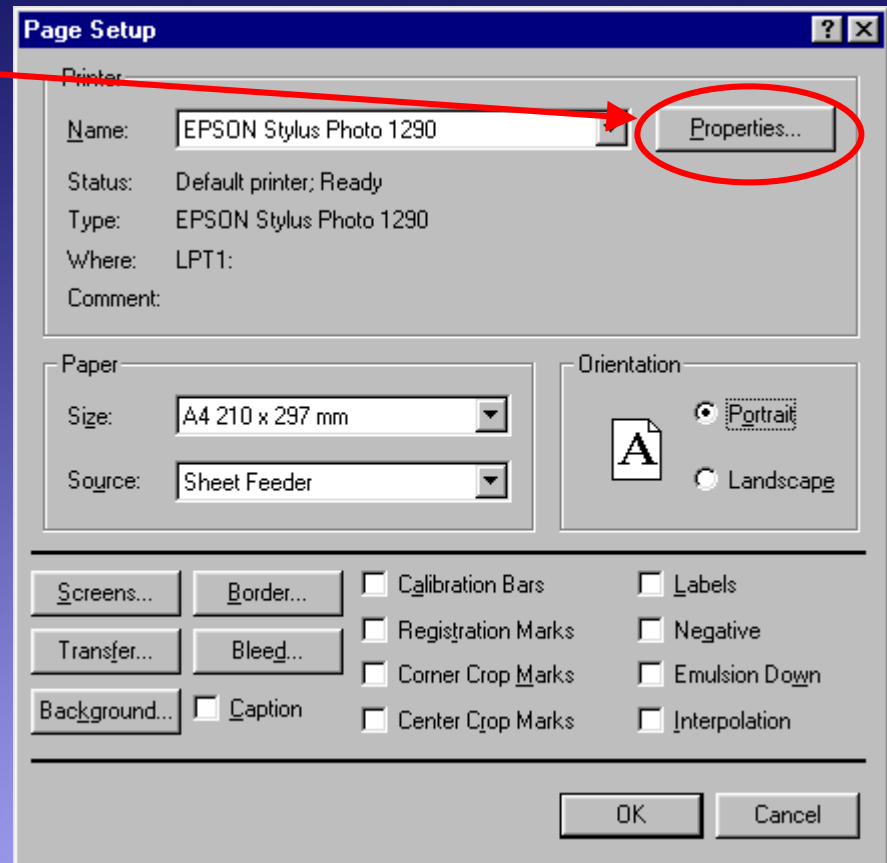
Printing: Workflow 1 Cont.

- Select the Setup Button.



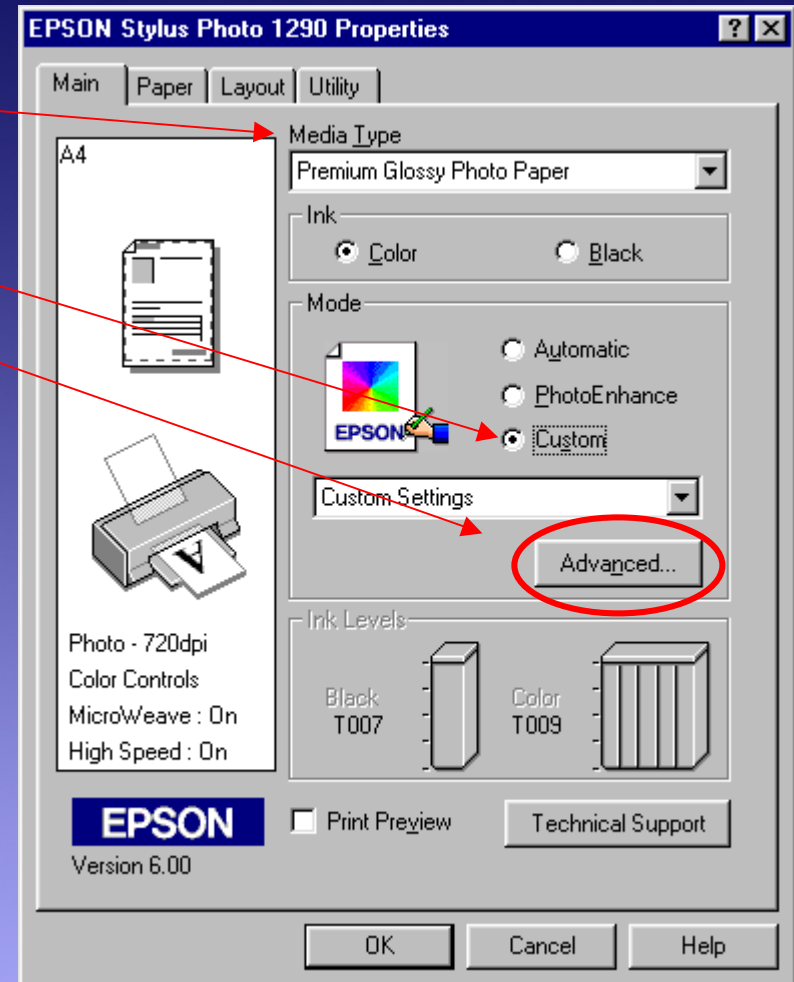
Printing: Workflow 1 Cont.

- Select Properties.



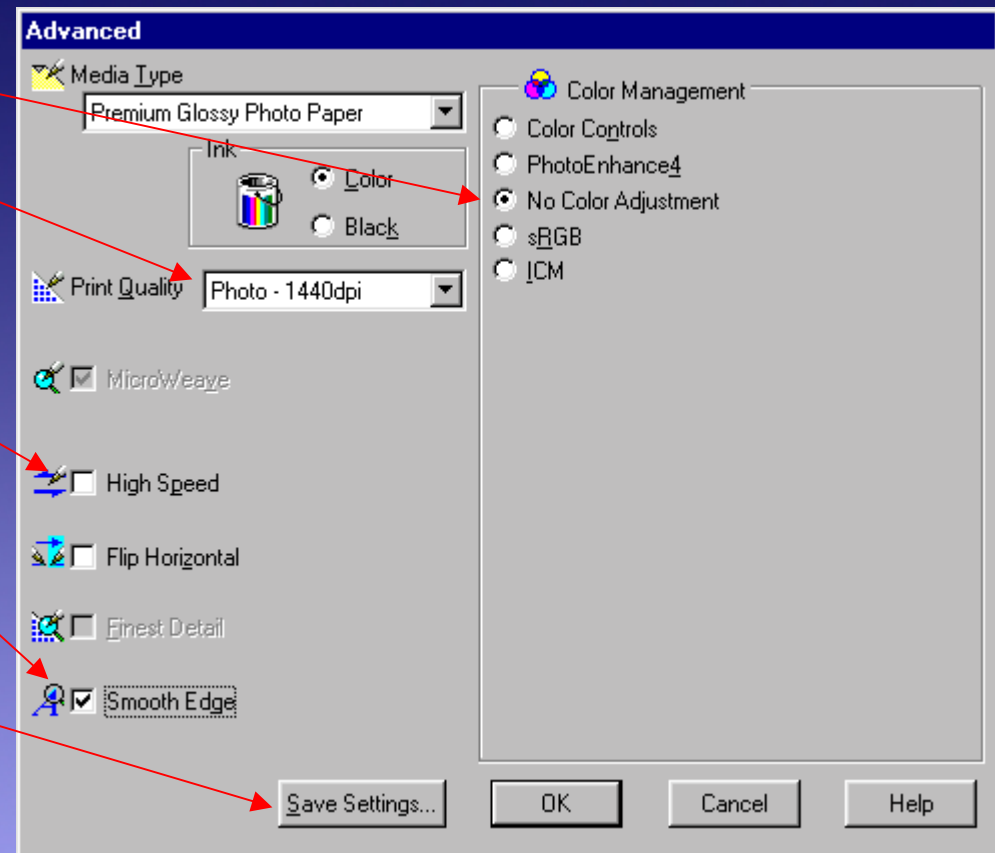
Printing: Workflow 1 Cont.

- Select Media Type.
- Select Custom.
- Select Advanced.



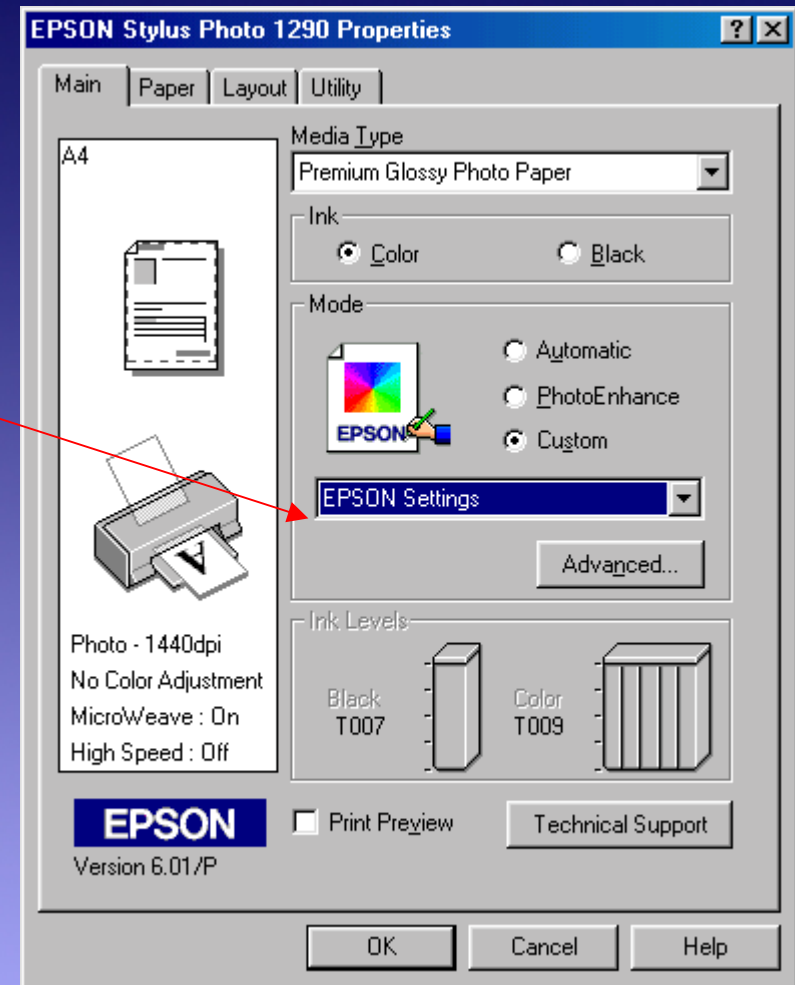
Printing: Workflow 1 Cont.

- Select No Color Adjustment.
- Select Photo – 1440dpi (The Profiles being used are optimised for 1440dpi).
- Uncheck High Speed.
- Check Smooth Edge (although not important).
- Save these settings for future selection.



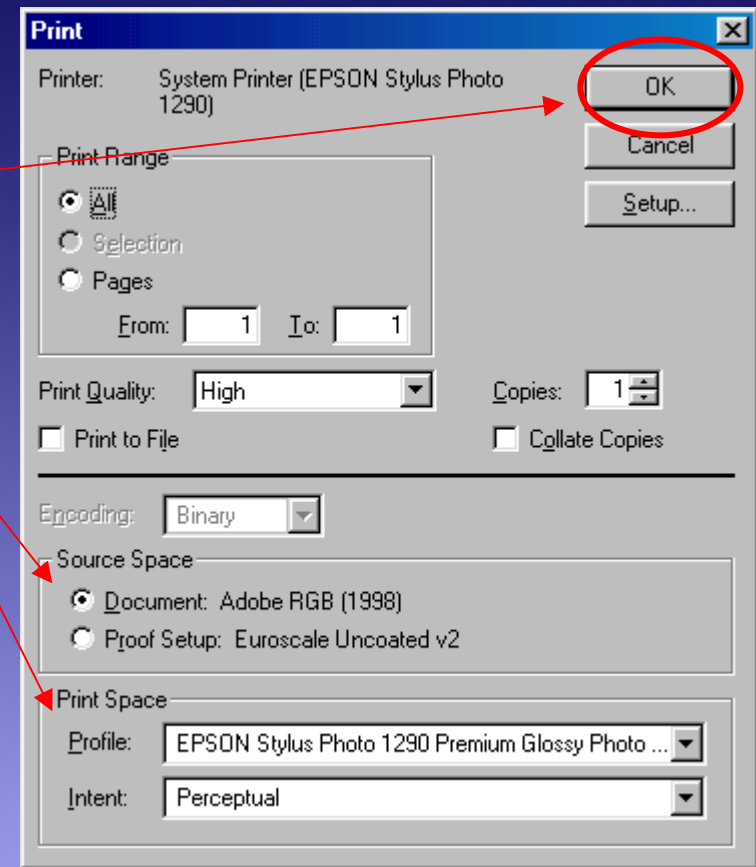
Printing: Workflow 1 Cont.

- Once the settings are saved, there is no need to go to the advanced dialogue box.
- Select the saved settings only.



Printing: Workflow 1 Cont.

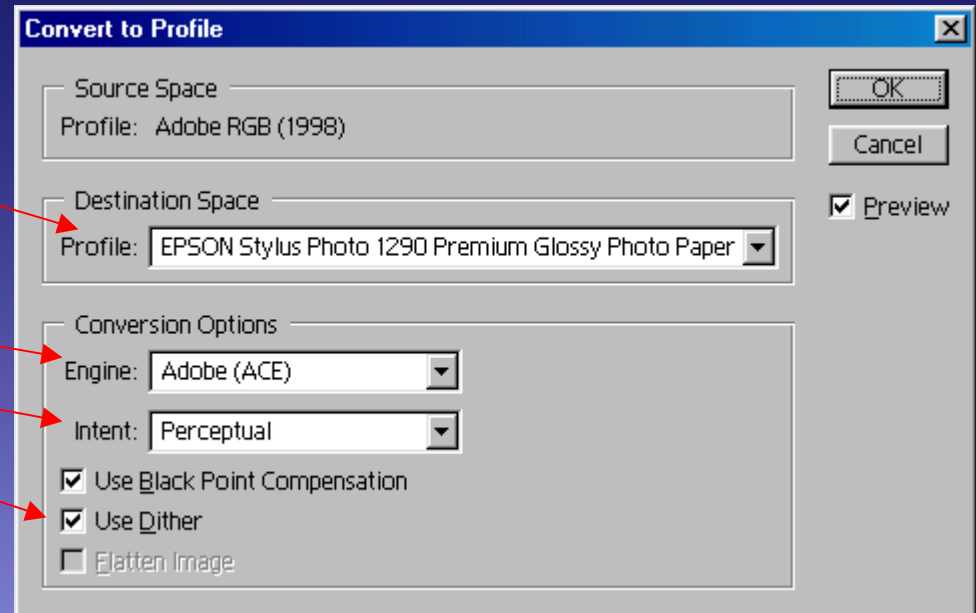
- Double check the setting.
- Press the OK Button to print.



Workflow 2

Printing: Workflow 2

- Select; Image > Mode > Convert to Profile.
- Select the media profile.
- Leave the Engine as Adobe(ACE).
- Choose the Intent.
- Leave the rest as default.
- These setting should match whatever gave you the best image in the Soft Proof.

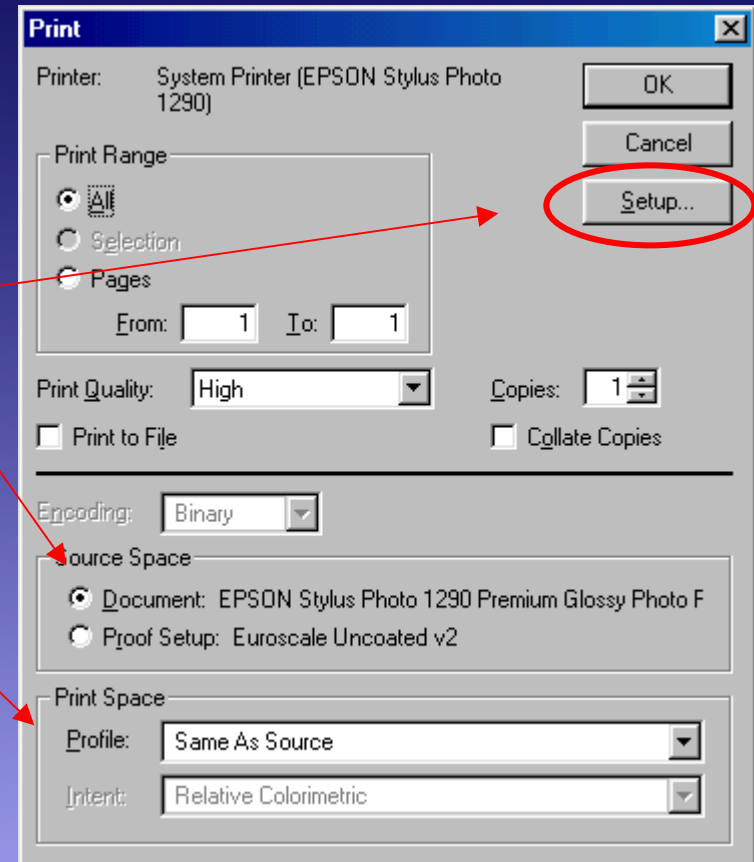


Printing: Workflow 2 Cont.

- Select OK, to the Convert to Profile Dialogue Box.
- This will embed the Profile into the picture.
- This image is now "purposed" for a particular printer and paper combination. Printing on another device or paper may produce strange results.

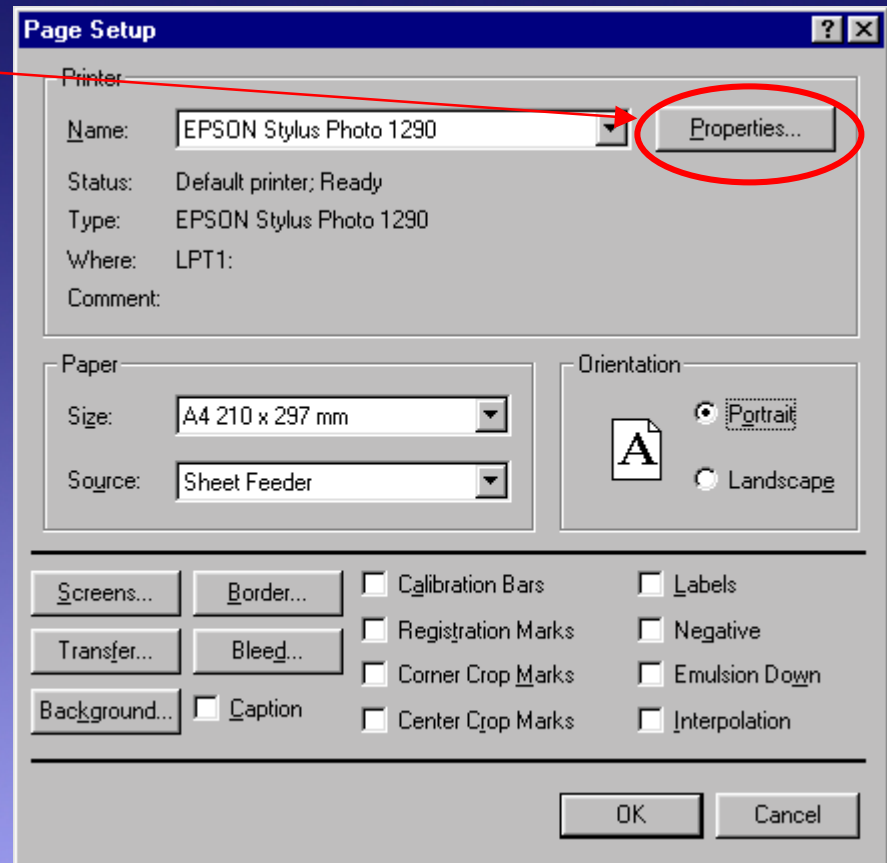
Printing: Workflow 2 Cont.

- Select; File > Print.
- Profile is now embedded.
- Leave Profile, Same as Source.
- Press Setup.



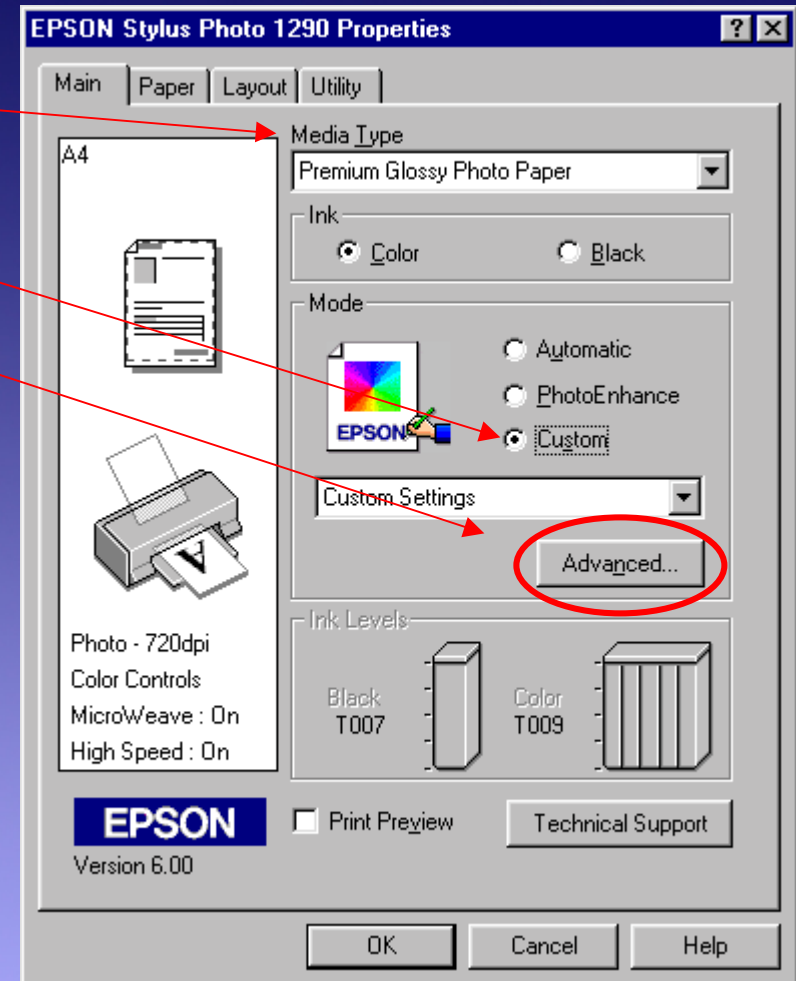
Printing: Workflow 2 Cont.

- Select Properties.



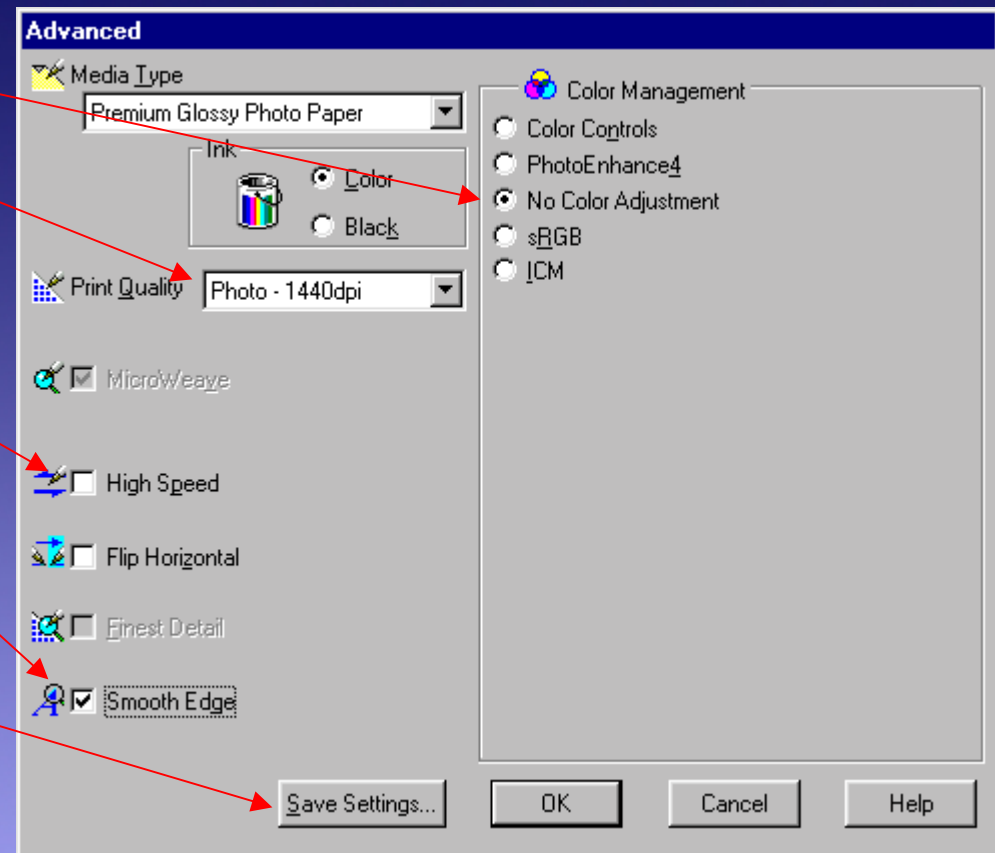
Printing: Workflow 2 Cont.

- Select Media Type.
- Select Custom.
- Select Advanced.



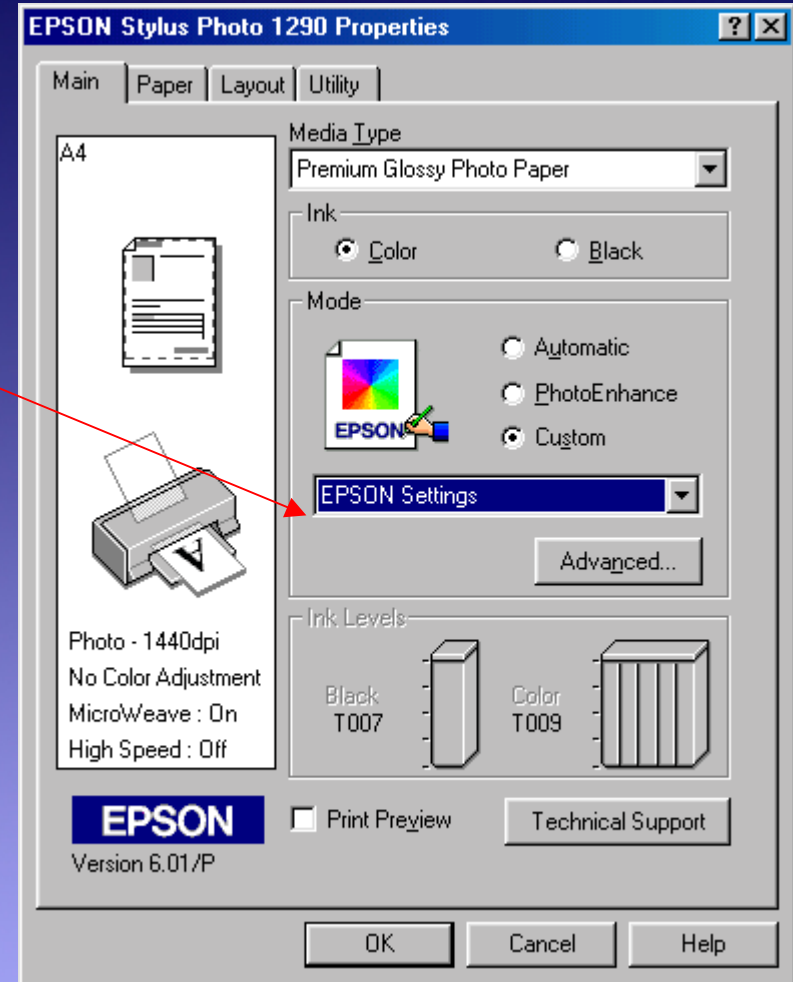
Printing: Workflow 2 Cont.

- Select No Color Adjustment.
- Select Photo – 1440dpi
(The Profiles being used are optimised for 1440dpi).
- Uncheck High Speed.
- Check Smooth Edge
(although not important).
- Save these settings for future selection.



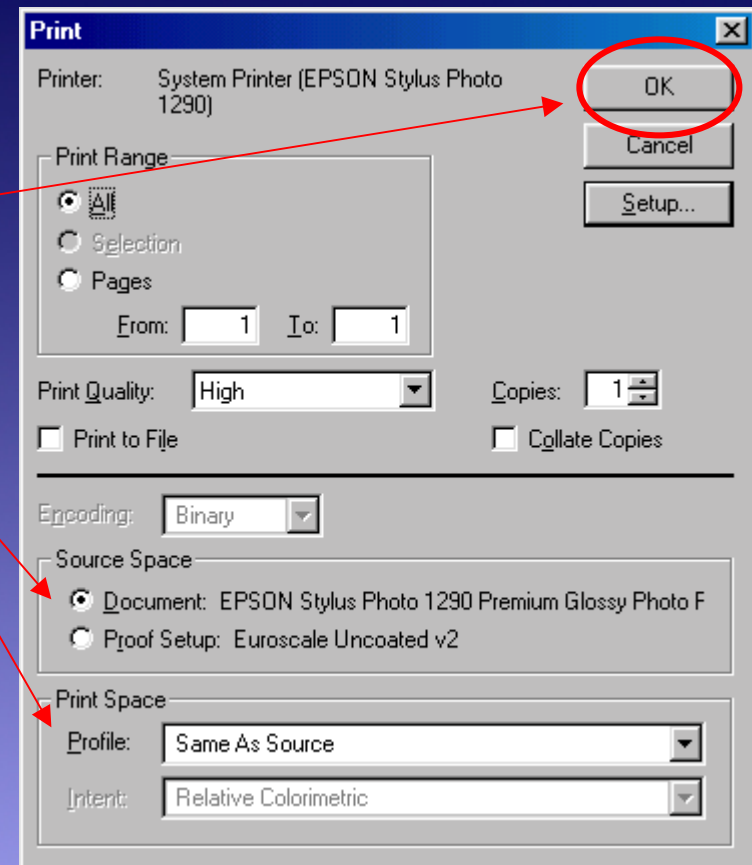
Printing: Workflow 2 Cont.

- Once the settings are saved, there is no need to go to the advanced dialogue box.
- Select the saved settings only.



Printing: Workflow 2 Cont.

- Double check the setting.
- Press the OK Button to print.



Conclusion

- The Setting suggested in this presentation are only a starting point to assist in the awareness of RGB colour management.
- Further experimentation and research should be done to be able to understand colour management at a higher level.
- The use of Genuine EPSON Inks and Media is paramount in obtaining the best results from your printer to produce the best quality images possible.

Web Links

www.epson.com.au

www.digitaldog.net

www.computer-darkroom.co.uk

www.adobe.com

www.apple.com

Thank You