

EPSON® STYLUS™ PHOTO 2100

Specifications

Model

- Model Name: EPSON Stylus Photo 2100
- Part Number: C11C387022

Characteristics

- Type: A4 7 Colour Inkjet
- Technology: EPSON Micro Piezo™
- Print direction: Bi-directional with logic seeking
- Print head: 96 nozzles – Black, 96 nozzles – colour (cyan, magenta, yellow, light cyan, light magenta, light black)
- Noise Level: 42dba (ISO 9296)
- Power consumption: 19W (during printing ISO/IEC 10561 Letter Pattern)
- ENERGY STAR Compliant

Weight

- 11.2Kg

Resolution

- Maximum 2880 x 1440dpi in black and in colour
- Maximum Resolution: Plain Paper: up to 720dpi
Glossy paper – Photo Weight: up to 2880dpi
Premium Semigloss Photo Paper: 2880dpi
Archival Matte Paper: up to 1440dpi
Watercolor Paper – Radiant White: up to 1440dpi

Speed

- Approx. 7.4ppm in black A4 text memo pattern (Economy mode)*¹
- Approx. 7.3ppm in colour A4 text memo pattern (Economy mode)*²
- Approx. 3.1ppm for A4 document with text and colour graphics*³
- Approx. 230secs for 8 x 10" photo bike image**
*please see thumbnails for sample illustrations

Driver

- Driver: Windows 95, Windows 98, Windows Me, Windows NT 4.0, Windows 2000, Windows XP, Mac

System Requirements

Windows:

- Minimum: Pentium for Windows 95/98/NT4.0
Pentium 133MHz for Windows 2000
Pentium 150MHz for Windows Me
Pentium 233MHz for Windows XP
16MB RAM for Windows 95/98/NT4.0
32MB RAM for Windows Me
64MB RAM for Windows 2000/XP
20MB free HDD space for Windows 95/98/Me
40MB free HDD space for Windows NT4.0/2000
100MB free HDD space for Windows XP
- Recommended: Pentium 1GHz or higher for all operating systems
64MB RAM or more for all operating systems except XP
Windows XP: 128MB RAM or more
50MB or more free HDD space for Windows 95/98/Me
100MB or more free HDD space for Windows NT4.0/2000/XP

Mac:

- Minimum: Mac OS 8.1
19MB free RAM (foreground printing, A4)
26MB free RAM (foreground printing, A3+)
22MB free RAM (background printing, A4)
27MB free RAM (background printing, A3+)
- Recommended: Mac OS 8.5.1 or later
38MB free RAM (foreground printing, A4)
55MB free RAM (foreground printing, A3+)
64MB free RAM (background printing, A4)
91MB free RAM (background printing, A3+)

Colour Matching

- EPSON Colour management system included in Windows and Mac drivers:
 - Windows ICM (95/98/Me/2000/XP)
 - sRGB (Windows 98/Me/2000/XP)
 - Apple ColorSync 2.0 compatible

Interfaces & Connectivity

- 3 interfaces as standard:
 - Bi-directional Parallel Interface (IEEE-1284)
 - USB2 (port is compatible with standard USB)
 - IEEE 1394 (FireWire)

Memory

- Buffer Memory 256KB

Software

- EPSON PhotoQuicker ver 3.1
- EPSON Print CD
- EPSON Gray Balancer

Paper Handling

- 100 A3+ Sheet Feeder
- 1 sheet of Premium Semigloss Photo Paper
- 1 sheet of Glossy Paper – Photo Weight
- 1 sheet of Archival Matte Paper
- 1 sheet of Watercolor Paper – Radiant White

Paper Support

- Paper size: A3+, A3, A4, A5, A6, Letter, Legal, Executive
- Envelope: 10 envelope, DL, C6, (45 – 75gsm)
- Other media:
 - Glossy Paper – Photo Weight: A4, A3, A3+
 - Premium Semigloss Photo Paper: A4, A3, A3+, 100mmx8m, 210mmx10m, 329x10m
 - Archival Matte Paper: A4, A3, A3+, 100mmx8m
 - Watercolour Paper – Radiant White: A3+
 - Weight: From 64 to 90gr/m² for plain paper
 - Up to 251gr/m² for Photographic media
 - Up to 1.3mm thick for straight paper path
 - Maximum printable area 329mm width x 483mm length*
- Print margin 0mm top, left, right and bottom*
*Via 'No Margins' setting in printer driver. Otherwise 3mm top, right & left, 14mm bottom. Bottom margin can also be adjusted to 3mm via custom settings

CE Compliant

- Directive 89/336/EEC and 73/23/EEC

Dimensions

- Storage: (H) 205mm x (W) 631mm x (D) 334mm
- Operation: (H) 409mm x (W) 631mm x (D) 864mm

Ink Cartridge

- Photo Black ink cartridge approx 628 (ECMA) A4 pages T034140
- Matte Black ink cartridge approx 628 (ECMA) A4 pages T034840
- Light Black ink cartridge approx 440 A4 pages at 5% T034740
- Cyan ink cartridge approx 440 A4 pages at 5% T034240
- Magenta ink cartridge approx 440 A4 pages at 5% T034340
- Yellow ink cartridge approx 440 A4 pages at 5% T034440
- Light Cyan ink cartridge approx 440 A4 pages at 5% T034540
- Light Magenta ink cartridge approx 440 A4 pages at 5% T034640
- Example for printing the 'Bike' image (720dpi at 8x10")
Individual Ink cartridge yields:
Photo Black: 370 pages, Cyan: 416 pages, Magenta: 268 pages, Yellow: 149 pages, Light Cyan: 104 pages, Light Magenta: 89 pages, Light Black: 74 pages

Media Availability

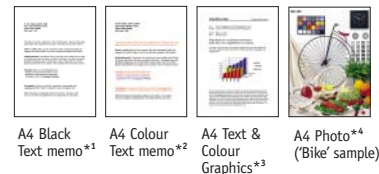
- Premium Inkjet Plain Paper A4 (250 sheets) S041214
- Premium Semigloss Photo Paper:
 - A4 (20 sheets) S041332
 - A3 (20 sheets) S041334
 - A3+ (20 sheets) S041328
- Premium Semigloss Photo Paper Roll:
 - 100mmx8m S041330
 - 210mmx10m S041336
 - 329mmx10m S041338
- Glossy Paper Photo Weight:
 - A4 (20 sheets) S041349
 - A3 (20 sheets) S041350
 - A3+ (20 sheets) S041347
- Watercolor Paper – Radiant White
 - A3+ (20 sheets) S041352
- Archival Matte Paper:
 - A4 (50 sheets) S041342
 - A3 (50 sheets) S041344
 - A3+ (50 sheets) S041340
 - 100mmx8m roll S041346
- Double Sided Matte Paper
 - A4 (50 sheets) S041569

Options

- EPSON Stylus RIP C12C842863

Warranty

- 1 year call out
- Optional extension to 3 years (ECPGRP35)
- Optional upgrade to 3 years on site (ECPGRP45)



** Illustration of 'Bike' image used for photo speeds.

Print Speeds Note:

Print times will vary depending on computer configuration, print setting, application, coverage and page complexity.

The print times shown in this brochure are the average time for multiple prints of the same page over one minute. Times are measured from the 'Print' command to the delivery of the page in the tray. The speeds were achieved using the following system: 200MHz Pentium PC, 64MB RAM, 2GB HDD, Windows 95 or 98.

EPSON (UK) Ltd,

Campus 100, Maylands Avenue,
Hemel Hempstead, Hertfordshire HP2 7TJ.
Telephone: +44 (0) 1442 261144
Fax: +44 (0) 1442 227227
E-mail: info@epson.co.uk
Home Page: www.epson.co.uk

ISO 14001 Certification Number 80679

Specifications subject to change.
All manufacturers trademarks acknowledged.



Test conditions as follows: (Indoor Display Condition)

Light source:	Fluorescent light
Intensity:	70,000 lux
Temperature:	24 °C
Humidity:	60%RH
Glass mount:	2mm, soda lime
Fade criteria:	Pure YMC 30% Loss at 0D=1
Display-life Calculation:	Total illuminance/(500 lux x 10 hours x 365 days = 1 year)

* The data is calculated by EPSON's accelerated test and it does not mean EPSON guarantee periods. Tests developed and conducted by EPSON.

EPSON®

EPSON® STYLUS™ PHOTO 2100



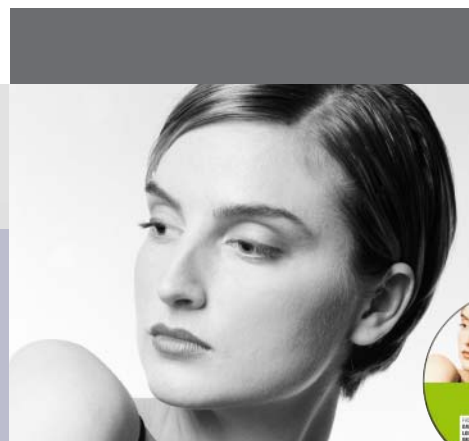
The world's most advanced A3+ photographic printing solution

- Breathtaking photo print quality – 2880 x 1440dpi
- Long lasting lightfastness suitable for professional re-sale or gallery display
- 7 colour printing with new Light Black as standard
- Individual ink cartridges for maximum ink efficiency
- Precise borderless printing on roll or sheet fed media
- Flexible media handling; paper roll holder, auto cutter and catcher

EPSON[®] STYLUS[™] PHOTO 2100

At last, a printer as stunning as your imagination

EPSON continues to set the standards in inkjet printing. With the Stylus Photo 2100, a new level of excellence is achieved. Fulfilling the creative needs of professional photographers, the Stylus Photo 2100 is a complete photo finishing solution, offering the most exceptional print quality ever. Immensely versatile and flexible, it produces long lasting photo quality prints suitable for both display and resale use.



The Digital Environment

EPSON has worked hard to meet the exacting requirements of professional and semi-professional photographers. Its recent groundbreaking advances in inkjet print head technology gives photographers the quality to create their work in the versatile digital environment. Minute details are recreated with astonishing clarity at high speeds due to EPSON's Variable-Sized Droplet Technology, combined with a new Micro Piezo print head.

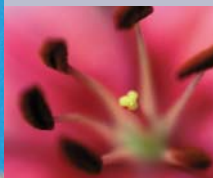
The New Black

The professional user can now match output between various grades of media, enhancements include an additional light black cartridge as standard. This improves gradations to both colour and black and white images, widening the colour gamut to enhance greyscale and colour tonal gradations. EPSON's 'Gray Balancer' software is designed to calibrate and customize the greyscales used in black and white photo reproduction. It gives you the flexibility to adjust the application of ink according to the conditions in which prints will be stored or displayed. The results are perfectly balanced, smooth toned, vibrant black and white photos. EPSON'S Stylus Photo 2100 uniquely offers two varieties of Black ink that can be interchanged to offer consistent quality and finishes between media types.

The standard 'Photo Black' ink cartridge is suitable for all media types including glossy surfaces, whilst the optional 'Matte Black' cartridge offers superior output on matte coated media such as fine art media.

Creative Flexibility

Whatever photography style is employed, the Stylus Photo 2100 has the flexibility to match the output requirements. 7 individual ink cartridges with re-sealable valves allows for flexible and efficient ink usage as partially used cartridges can be stored for use at a later date; continuous media printing and finishing is possible with the use of the standard roll paper holder and auto cutter, whilst a simultaneous paper load feature



THE COMPLETE PROFESSIONAL PHOTO OFFERING THE MOST EXCEPTIONAL

TECHNOLOGY

EPSON Micro Piezo[™] Technology

A combination of leading technologies to produce the most complete colour printing solution available. EPSON hardware, software paper and inks combine to produce the ultimate in image reproduction.

2880dpi resolution

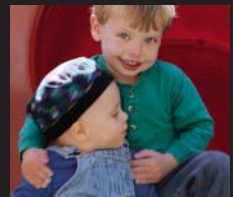
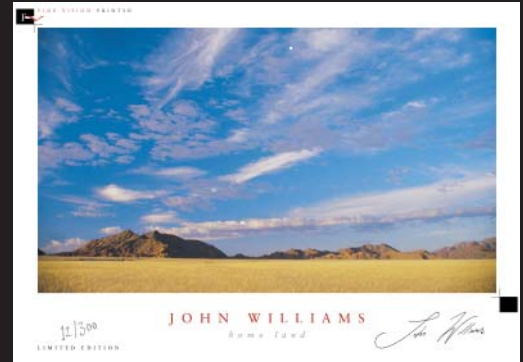
This increased resolution can be achieved due to the highly advanced Micro Piezo[™] printhead producing improved tonal gradation, wider colour gamut and exceptional quality.

EPSON Ultra Micro Dot[™]

The permanent EPSON Micro Piezo[™] print head propels perfectly formed ink droplets onto the page with absolute precision producing the virtually invisible 4 picolitre EPSON Ultra Micro Dot[™] for high quality reproduction.

EPSON Variable-Sized Droplet Technology

Optimum speed and quality is achieved by utilising different size ink droplets. Small dots for areas of fine detail and large dots for areas of block colour.



allows easy switching between cut sheet and roll media. In addition, the Direct CD printing function and software enables personalisation of CD faces without the need of special media so cataloguing digital images has never been simpler. Processing bottlenecks are eliminated due to the extensive high-speed connectivity options.

Whether you're printing on CD's, monochrome portraits, colour wedding photos or full format panoramic landscapes, the Stylus Photo 2100 can handle all your printing needs with breathtaking print quality and with a print longevity of up to 75 years.*

WHY CHOOSE AN EPSON STYLUS PHOTO 2100?

- *Stunning quality photos, brilliant graphics and pin sharp text from the finest print resolution – 2880 x 1440 dots per inch*
- *Widest detail tonal range and optimum quality with the first seven colour printer (cyan, light cyan, magenta, light magenta, yellow, black and light black), all in separate cartridges for maximum efficiency*
- *Interchangeable Photo Black Ink for gloss media prints with optional Matte Black Ink for optimum output on matte finishes (eg Watercolor Paper), ideal for use in Fine Art Applications*
- *Professional resale or display use with lightfast pigment based inks for up to 75 years (dependent on media*)*
- *Effortless border free printing on sheet fed or roll media at 100mm, A4, A3 and A3+*
- *Continuous print solution, featuring paper roll holder, auto cutter and catcher, creating effortless panoramic shots, plus banner and multiple prints*
- *Total image control from camera to printer with PRINT Image Matching™ technology*
- *Direct CD/CD-R/DVD face and card printing (up to 1.3mm thick) enabled by unimpeded direct media path*
- *High speed Firewire, USB 2.0 and Parallel ports as standard for complete Mac and PC connectivity*
- *Optional StylusRIP for true Adobe® PostScript® support for complete compatibility†*

† please refer to www.epson.co.uk for availability



TO PRINTING SOLUTION,
PRINT QUALITY EVER

UltraChrome™ Pigment Inks

New reformulated UltraChrome™ pigment ink is a unique archive quality ink that will deliver extremely high quality and durability on a wide range of photographic media. This water and smudge resistant ink has been specifically designed to deliver superb colour expression and long lasting lightfastness.

Intelligence ink cartridges

Improved output and functionality these cartridges feature an integral IC memory chip that precisely tracks and communicates ink usage and incorporates a resealable valve enabling removal and installation for future use.

PRINT Image Matching™

Faithfully interprets settings, producing images faithful to the original Digital Still Camera image, reproducing richer colours with higher quality greens, blues, turquoises and natural skin tones.

* Dependent on media.
Please refer to lightfast test conditions on reverse.